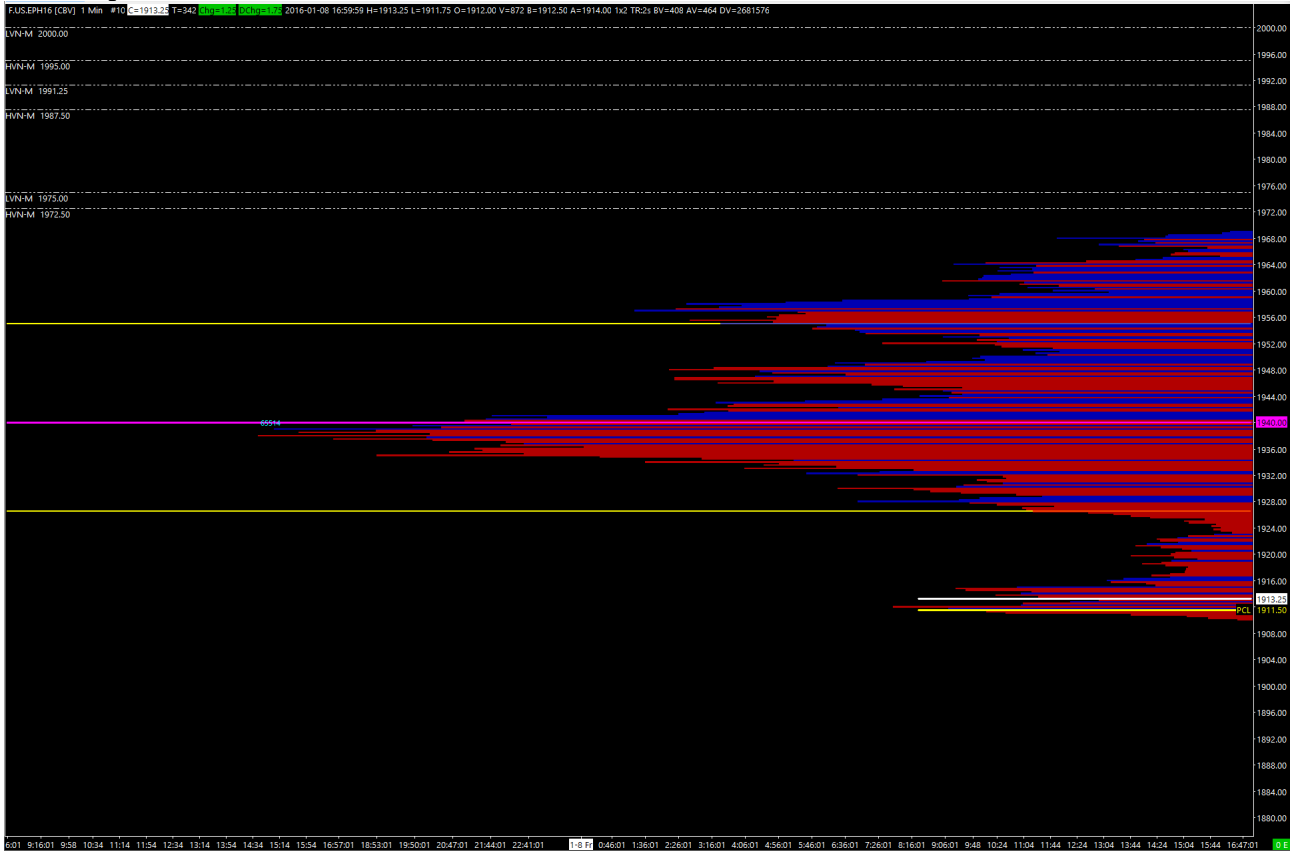


1. Duplicated a TPO weekly chart. After removing TPO Profile study, chart only shows weekly volume profile.



2. Next I change, the chart setting to use candlesticks, historical chart bar period to week

Chart Settings - ESH16/F.US.EPH16 [CBV] Daily #9

Main Settings | Advanced Settings | Advanced Settings 2 | Alerts

Date Range In File (yyyy-mm-dd):

Use Number Of Days To Load  
 Days To Load:   
 Adjust Proportional With Bar Period

Use Date Range  
 From:  To:

Price Display Format:   
 Tick Size:   
 Volume at Price Multiplier:

Symbol:    
 Trade and Current Quote Symbol:

Automatically Rollover Futures Symbol

Historical Chart:   
 Intraday Chart Bar Period:  
 Bar Period:   
  
 Fill Session Gap  
 New Bar When Exceeded

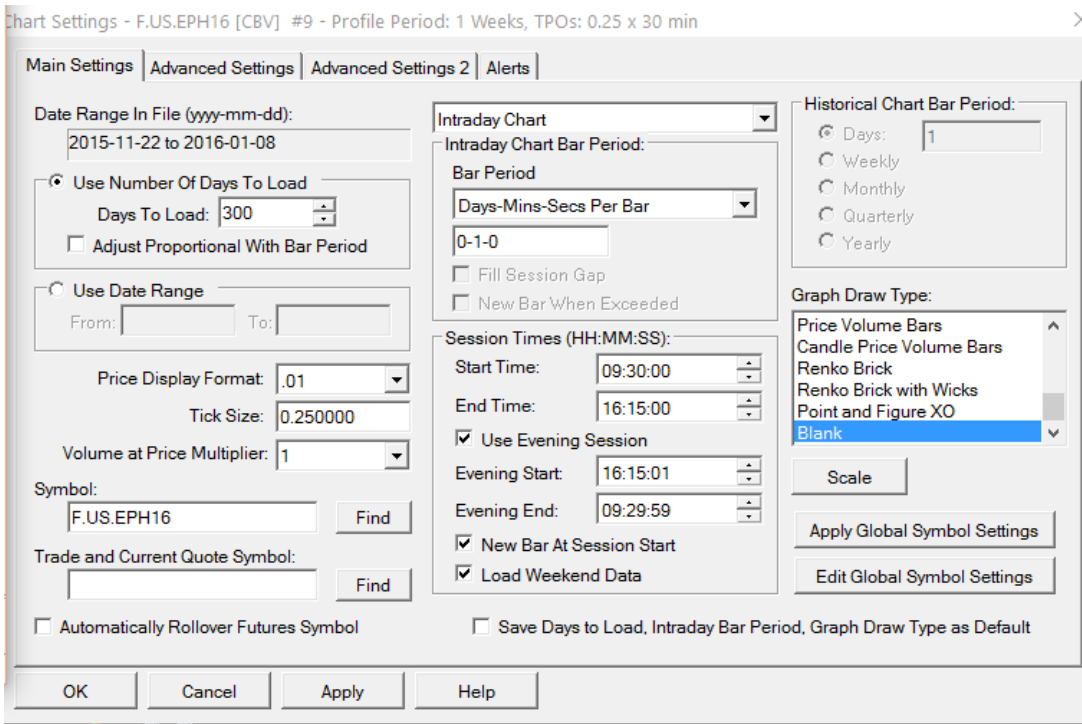
Session Times (HH:MM:SS):  
 Start Time:   
 End Time:   
 Use Evening Session  
 Evening Start:   
 Evening End:   
 New Bar At Session Start  
 Load Weekend Data

Historical Chart Bar Period:  
 Days:   
 Weekly  
 Monthly  
 Quarterly  
 Yearly

Graph Draw Type:

Save Days to Load, Intraday Bar Period, Graph Draw Type as Default

(original setting)



I get the below chart. It shows the missing July and Aug 2015 data.

