

Main Settings | Advanced Settings | Advanced Settings 2 | Advanced Settings 3 | Alerts

Date Range In File (yyyy-mm-dd):
From: 2019-11-26 To: 2020-02-04

Use Number Of Days To Load
Days To Load: 45 Market Depth: 10
 Adjust Proportional With Bar Period

Use Date Range
From: 2019-12-16 To: []

Price Display Format: 0.01
Tick Size: 0.250000
 Auto-Set From Data Feed

Volume at Price Mult: 1
Symbol: NQH20 Find

Trade and Current Quote Symbol: [] Find
 Use As Trade Only Symbol

Chart Data Type: Intraday Chart
Intraday Chart Bar Period: []
Bar Period Type: Days-Mins-Secs Per Bar
Setting: 0-1-0

Historical Chart Bar Period:
Days: 1
Weekly
Monthly
Quarterly
Yearly

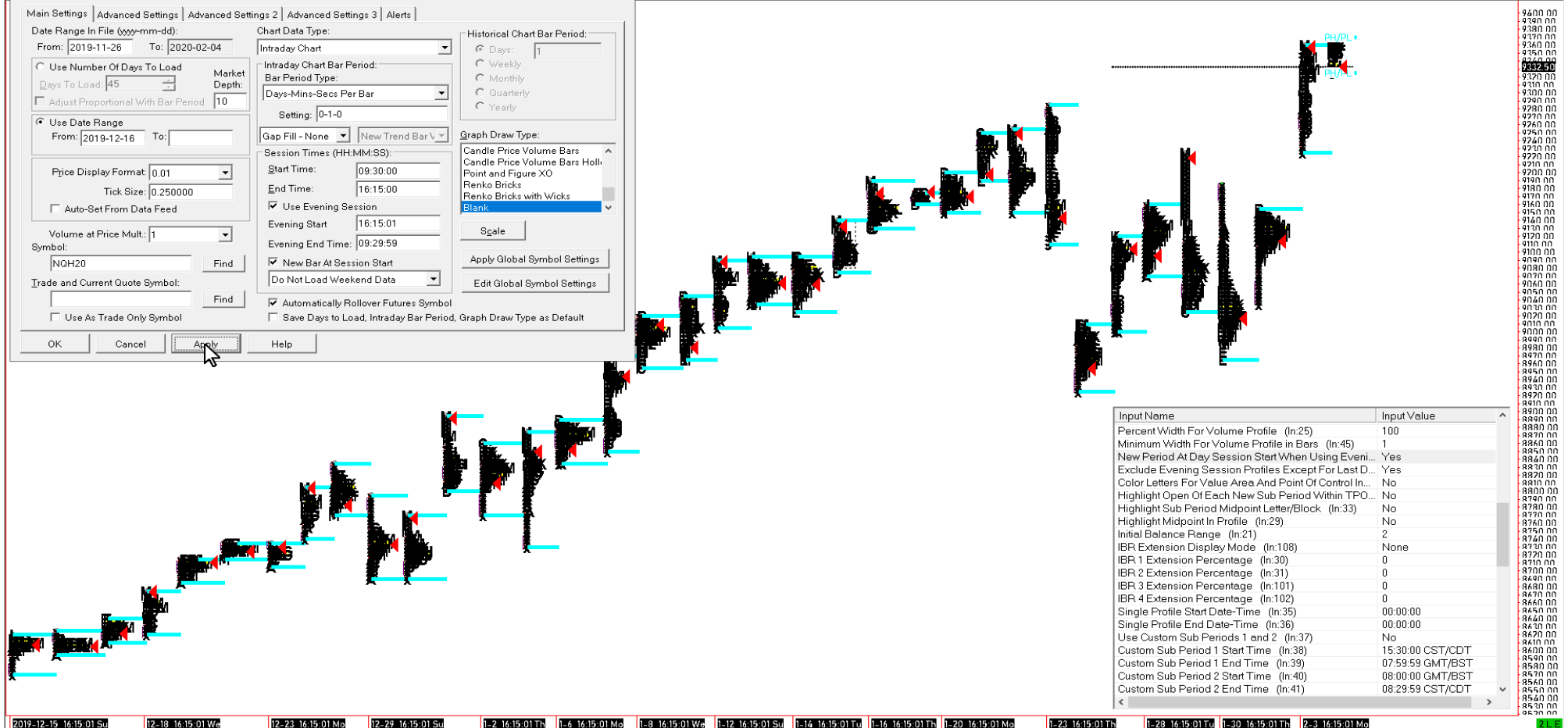
Gap Fill - None New Trend Bar V
Session Times (HH:MM:SS):
Start Time: 09:30:00
End Time: 16:15:00
 Use Evening Session
Evening Start: 16:15:01
Evening End Time: 09:29:59
 New Bar At Session Start
Do Not Load Weekend Data []

Graph Draw Type:
Candle Price Volume Bars
Candle Price Volume Bars Holl...
Point and Figure XO
Renko Bricks
Renko Bricks with Wicks
Blank

Scale
Apply Global Symbol Settings
Edit Global Symbol Settings

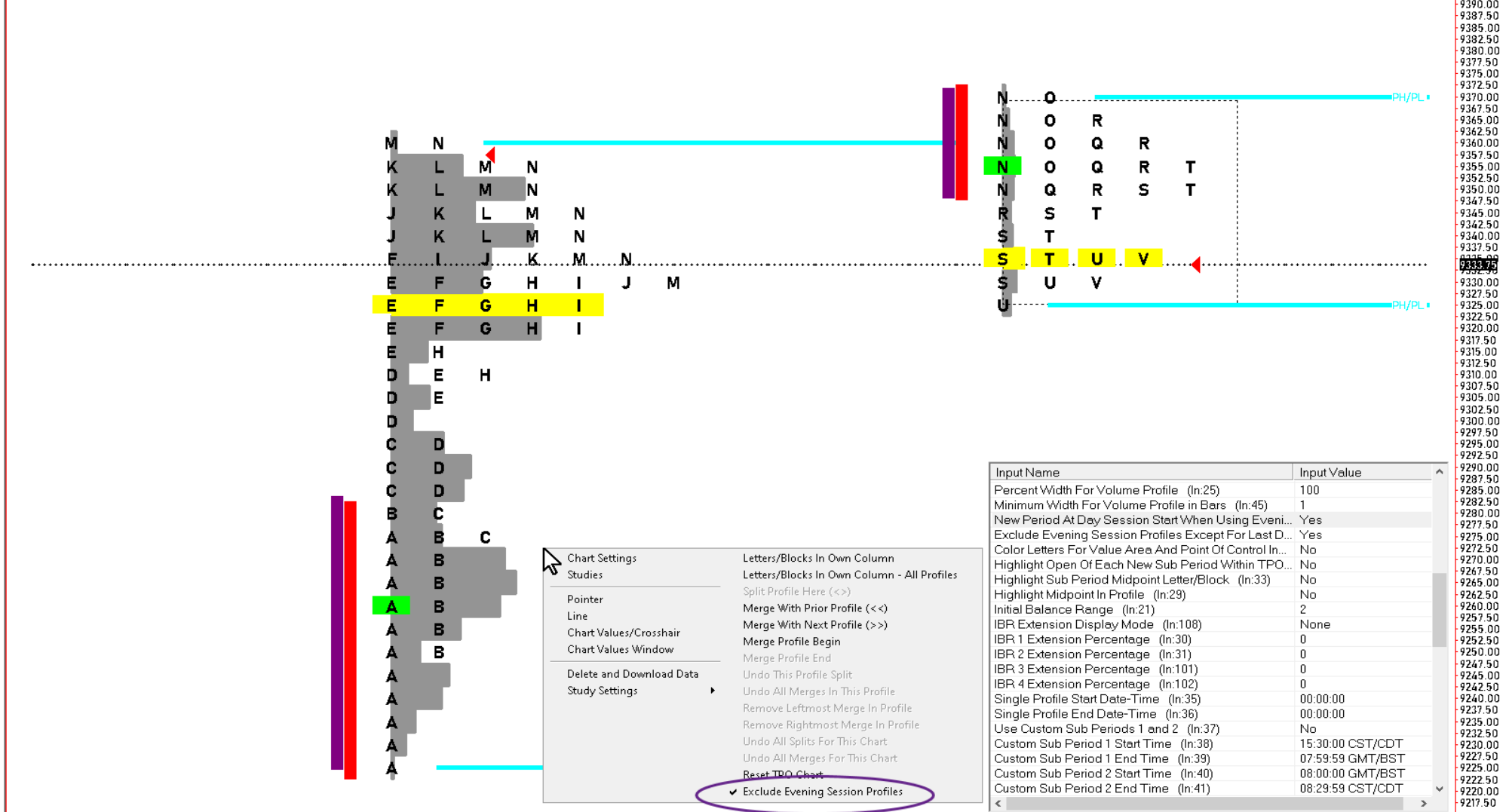
Automatically Rollover Futures Symbol
 Save Days to Load, Intraday Bar Period, Graph Draw Type as Default

OK Cancel Apply Help



Input Name	Input Value
Percent Width For Volume Profile (In:25)	100
Minimum Width For Volume Profile in Bars (In:45)	1
New Period At Day Session Start When Using Eveni...	Yes
Exclude Evening Session Profiles Except For Last D...	Yes
Color Letters For Value Area And Point Of Control In...	No
Highlight Open Of Each New Sub Period Within TPO...	No
Highlight Sub Period Midpoint Letter/Block (In:33)	No
Highlight Midpoint In Profile (In:29)	No
Initial Balance Range (In:21)	2
IBR Extension Display Mode (In:108)	None
IBR 1 Extension Percentage (In:30)	0
IBR 2 Extension Percentage (In:31)	0
IBR 3 Extension Percentage (In:101)	0
IBR 4 Extension Percentage (In:102)	0
Single Profile Start Date-Time (In:35)	00:00:00
Single Profile End Date-Time (In:36)	00:00:00
Use Custom Sub Periods 1 and 2 (In:37)	No
Custom Sub Period 1 Start Time (In:38)	15:30:00 CST/CDT
Custom Sub Period 1 End Time (In:39)	07:59:59 GMT/BST
Custom Sub Period 2 Start Time (In:40)	08:00:00 GMT/BST
Custom Sub Period 2 End Time (In:41)	08:29:59 CST/CDT

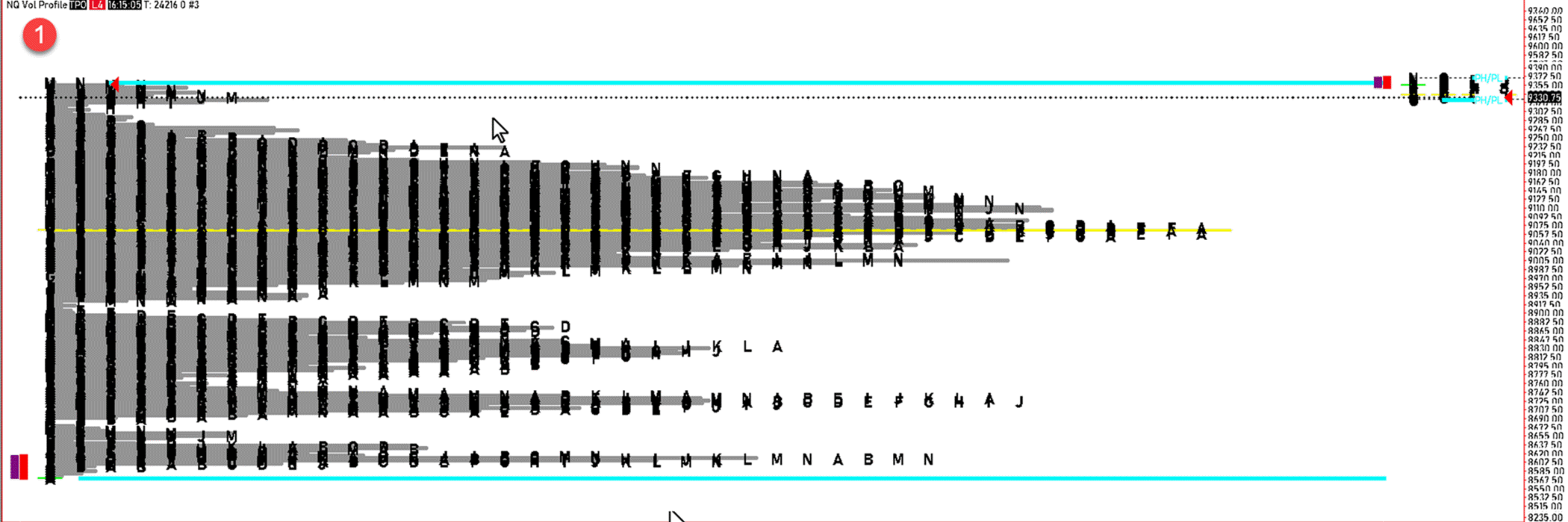
NQ Vol Profile TPO L:4 20:18:22 T: 23497 TR: 26m 39s #3



9390.00
9387.50
9385.00
9382.50
9380.00
9377.50
9375.00
9372.50
9370.00
9367.50
9365.00
9362.50
9360.00
9357.50
9355.00
9352.50
9350.00
9347.50
9345.00
9342.50
9340.00
9337.50
9335.00
9332.50
9330.00
9327.50
9325.00
9322.50
9320.00
9317.50
9315.00
9312.50
9310.00
9307.50
9305.00
9302.50
9300.00
9297.50
9295.00
9292.50
9290.00
9287.50
9285.00
9282.50
9280.00
9277.50
9275.00
9272.50
9270.00
9267.50
9265.00
9262.50
9260.00
9257.50
9255.00
9252.50
9250.00
9247.50
9245.00
9242.50
9240.00
9237.50
9235.00
9232.50
9230.00
9227.50
9225.00
9222.50
9220.00
9217.50

Input Name	Input Value
Percent Width For Volume Profile (In:25)	100
Minimum Width For Volume Profile in Bars (In:45)	1
New Period At Day Session Start When Using Eveni...	Yes
Exclude Evening Session Profiles Except For Last D...	Yes
Color Letters For Value Area And Point Of Control In...	No
Highlight Open Of Each New Sub Period Within TPO...	No
Highlight Sub Period Midpoint Letter/Block (In:33)	No
Highlight Midpoint In Profile (In:29)	No
Initial Balance Range (In:21)	2
IBR Extension Display Mode (In:108)	None
IBR 1 Extension Percentage (In:30)	0
IBR 2 Extension Percentage (In:31)	0
IBR 3 Extension Percentage (In:101)	0
IBR 4 Extension Percentage (In:102)	0
Single Profile Start Date-Time (In:35)	00:00:00
Single Profile End Date-Time (In:36)	00:00:00
Use Custom Sub Periods 1 and 2 (In:37)	No
Custom Sub Period 1 Start Time (In:38)	15:30:00 CST/CDT
Custom Sub Period 1 End Time (In:39)	07:59:59 GMT/BST
Custom Sub Period 2 Start Time (In:40)	08:00:00 GMT/BST
Custom Sub Period 2 End Time (In:41)	08:29:59 CST/CDT

- Chart Settings
- Letters/Blocks In Own Column
- Letters/Blocks In Own Column - All Profiles
- Split Profile Here (<>)
- Merge With Prior Profile (<<)
- Merge With Next Profile (>>)
- Merge Profile Begin
- Merge Profile End
- Undo This Profile Split
- Undo All Merges In This Profile
- Remove Leftmost Merge In Profile
- Remove Rightmost Merge In Profile
- Undo All Splits For This Chart
- Undo All Merges For This Chart
- Reset TPO Chart
- Exclude Evening Session Profiles



Price data table with values ranging from 9340.00 to 8235.00.

<p>Chart Settings Studies</p> <p>Pointer Line Chart Values/Crosshair Chart Values Window</p> <p>Delete and Download Data Study Settings</p> <p>2</p>	<p>Letters/Blocks In Own Column Letters/Blocks In Own Column - All Profiles Split Profile Here (<>) Merge With Prior Profile (<<) Merge With Next Profile (>>) Merge Profile Begin Merge Profile End Undo This Profile Split Undo All Merges In This Profile Remove Leftmost Merge In Profile Remove Rightmost Merge In Profile Undo All Splits For This Chart Undo All Merges For This Chart Reset TPO Chart Exclude Evening Session Profiles</p>	<p>Chart Settings Studies</p> <p>Pointer Line Chart Values/Crosshair Chart Values Window</p> <p>Delete and Download Data Study Settings</p> <p>3</p>	<p>Letters/Blocks In Own Column Letters/Blocks In Own Column - All Profiles Split Profile Here (<>) Merge With Prior Profile (<<) Merge With Next Profile (>>) Merge Profile Begin Merge Profile End Undo This Profile Split Undo All Merges In This Profile Remove Leftmost Merge In Profile Remove Rightmost Merge In Profile Undo All Splits For This Chart Undo All Merges For This Chart Reset TPO Chart Exclude Evening Session Profiles</p>	<p>Chart Settings Studies</p> <p>Pointer Line Chart Values/Crosshair Chart Values Window</p> <p>Delete and Download Data Study Settings</p> <p>4</p>	<p>Letters/Blocks In Own Column Letters/Blocks In Own Column - All Profiles Split Profile Here (<>) Merge With Prior Profile (<<) Merge With Next Profile (>>) Merge Profile Begin Merge Profile End Undo This Profile Split Undo All Merges In This Profile Remove Leftmost Merge In Profile Remove Rightmost Merge In Profile Undo All Splits For This Chart Undo All Merges For This Chart Reset TPO Chart Exclude Evening Session Profiles</p>	<p>5</p>
---	---	---	---	---	---	-----------------