

Introduction

The following Slides are actual screenshots of a LIVE Trade, detailing how this DOES reflect in FXCM's API with Bracket-Order Stop set to "All OCO Group"; despite your website's FXCM Trading Service describing it otherwise; (FXCM:Server Managed OCO (Order Cancels Order): =**No** (should be =Yes) •

But most importantly, the following slides proof/show, how SC first triggers the Move-To-Breakeven-Stop before Target1 is triggered (when using FXCM's API)

... as with all other competitor's trading platforms, Target1 (if set) is the actual trigger for a Move-To-Breakeven-Stop

... this may be because SC (or FXCM's API) is programmed to trigger Move-To-Breakeven-Stop when the last price traded is equal to the Trigger Offset, whereas the Target1 'in real LIVE trading' only gets triggered when the Last Price moves through the ASK price (when Long).

the following slides are comprehensive and to the point ...

My Bracket-order Settings ... (notice how Target1 is equal to 'All-OCO-Groups' Stop Trigger Offset, as I want Target1 to be the trigger)

The image displays four sequential screenshots of the 'AUDUSD 2 min 30 sec #6' window in a trading platform, showing the configuration of a bracket order. Each window has a title bar with a close button and a dropdown menu set to '=test 5.10.15 Forex'. Below the title bar is a green bar with 'Qty: 30000 Target/Stops Match'. The main area contains a list of targets and a configuration panel.

Window 1: The target list shows 'Target 1 | 4T | Qty:10000 | Lmt' selected. The configuration panel is set to 'Type: Target: Limit', 'Price' is selected, 'Limit Offset' is 4, 'Group' is 'OCO Group 1', and 'Quantity' is 10000. 'Move To Breakeven for Stop' is set to 'None' and 'TIF' is 'Good till Canceled'.

Window 2: The target list shows 'Target 2 | 10T | Qty:10000 | Lmt' selected. The configuration panel is set to 'Type: Target: Limit', 'Price' is selected, 'Limit Offset' is 10, 'Group' is 'OCO Group 2', and 'Quantity' is 10000. 'Move To Breakeven for Stop' is set to 'None' and 'TIF' is 'Good till Canceled'.

Window 3: The target list shows 'Target 3 | 15T | Qty:10000 | Lmt' selected. The configuration panel is set to 'Type: Target: Limit', 'Price' is selected, 'Limit Offset' is 15, 'Group' is 'OCO Group 3', and 'Quantity' is 10000. 'Move To Breakeven for Stop' is set to 'None' and 'TIF' is 'Good till Canceled'.

Window 4: The target list shows 'Stop All | 15T | Stop' selected. The configuration panel is set to 'Type: Stop: Stop', 'Price' is selected, 'Stop Offset' is 15, 'Group' is 'All OCO Groups', and 'Quantity' is 1. 'Move To Breakeven for Stop' is set to 'Offset in Ticks Triggered', 'BE Level Offset' is 0, and 'Trigger Offset' is 4. 'TIF' is 'Good till Canceled'.

After a 3-Target Bracket-Order BUY in SC, the LIVE executed Trade reflect in my LIVE FXCM Account Platform, see below.

Entry=1.03299, GroupOCOStop=1.03150(-15), Target123=1.03340(+4),1.03400(+10),1.03450(+15), respectively.

btw. see how FXCM handles the 'Open' in 5 decimals, while SC ignores the 5th decimal, and only uses 4 decimals (Open 1.03299 vs [+4Target1] 1.03340 (instead of 1.0339))

But your answer to my Post was: "The Tick Size for trading you control, and that is done through Chart >> Chart Settings. Not certain why you are asking us about this. Clearly you have already altered the settings."

The screenshot displays the FXCM Trading Station interface with several panels:

- Simple Dealing Rates (3):** A table showing market data for AUD/USD, XAU/USD, and AUS200.
- Accounts (1):** A summary table for the account balance, equity, and P/L.
- Orders (3OCO):** A table of pending orders, with a red box highlighting the 'Amount' and 'Sell' columns for three OCO orders.
- Open Positions (3):** A table of current open positions, with a red box highlighting the 'Open' column.
- News (0):** A panel for news subscriptions.
- Actions:** A log of recent actions performed in the platform.

Symbol	Sell	Buy	Spre...	High	Low	Roll S	Roll B	Pip Cost	MMR	Time
AUD/USD	1.03295	1.03311	1.6	1.03955	1.03257	-3.06	1.47	0.97	50.00	23:45:07
XAU/USD	1,384.69	1,385.19	50.0	1,392.94	1,364.94	0.00	-0.086f	0.01	5.00	23:45:07
AUS200	4,975	4,977	2.0	5,010	4,971	0.0289	-0.875f	1.00	70.00	23:45:04

Account	Balance	Equity	Day P/L	Usd Mr	Usbl Mr	Usbl Mr, ...	Gross P/L	MC	Type
4									

OrderID	Account	T	Status	Symbol	Amount	Sell	Buy	Stop	Limit	Time	Expir...
Entry Orders											
OCO AUD/USD (2)											
4:		E	Waiting	AUD/USD	10	1.03150				17/4/13	
4:		E	Waiting	AUD/USD	10	1.03340				17/4/13	
OCO AUD/USD (2)											
4:		E	Waiting	AUD/USD	10	1.03150				17/4/13	
4:		E	Waiting	AUD/USD	10	1.03400				17/4/13	
OCO AUD/USD (2)											
4:		E	Waiting	AUD/USD	10	1.03150				17/4/13	
4:		E	Waiting	AUD/USD	10	1.03450				17/4/13	

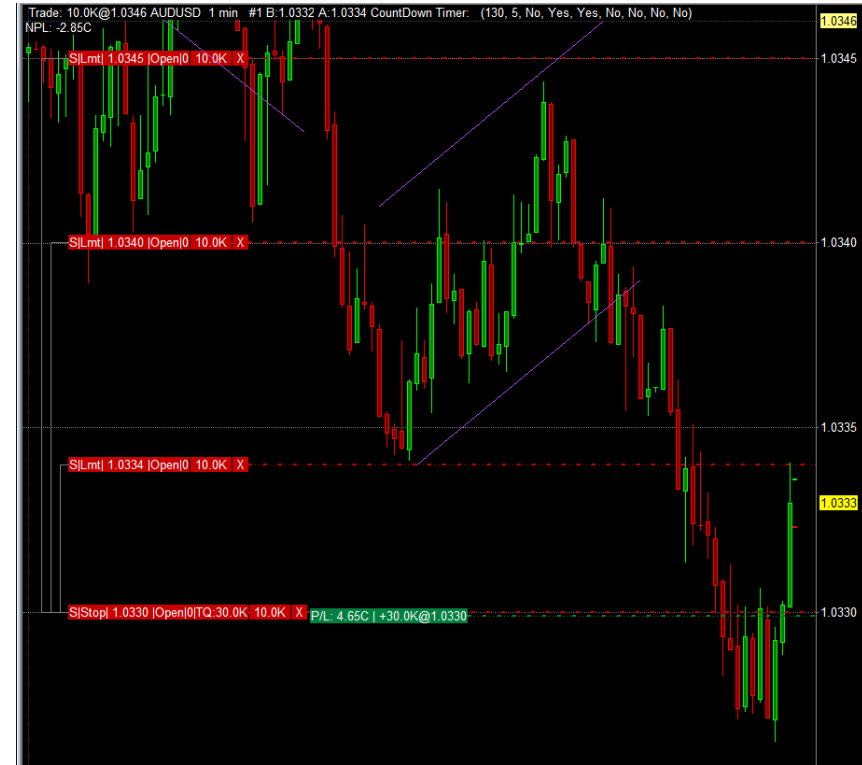
Ticket	Account	Symbol	Amount	S...	Open	Close	Stop	Stop Move	Limit	P/L	Gross P/L	Roll	Time
160		AUD/USD	10	B	1.03299	1.03295				-0.4	-0.39	0.00	17/4/13 23:41
160		AUD/USD	10	B	1.03299	1.03295				-0.4	-0.39	0.00	17/4/13 23:41
160		AUD/USD	10	B	1.03299	1.03295				-0.4	-0.39	0.00	17/4/13 23:41
Total			30							-1.2	-1.16	0.00	

Actions	Sent Time	Completed Time	Comments
Refresh Closed Positions	17/4/13 09:20	17/4/13 09:20	
Refresh Open Positions	17/4/13 09:20	17/4/13 09:20	
Refresh 5077564 Orders	17/4/13 09:20	17/4/13 09:20	

>>>> Here you can **clearly see**, how the Stop was moved to Break-Even by SC, before Target1 was triggered. (see next few slides how this reflects in FXCM)

SC Chart-Trader Live Positions after BUY Entry

Entry=1.03299, GroupOCOStop=1.03150(-15),
Target123=1.03340(+4),1.03400(+10),1.03450(+15), respectively



Unfortunately, I was not quick enough to manage a screenshot before Target1 did get triggered, but you can see from the next slides the remaining Stops and the correct level these were moved to and reflected in my FXCM account Platform.



... the remaining Target2 & Target3 (limit) positions (with GroupOCOstop moved to Breakeven, well actually not, as the real Breakeven value should have been 1.03299; hence my question, why SC [API] ignores the 5th decimal?)

FXCM Trading Station

System View Trading Charts Help

Sell Buy Stop/Limit Close Entry Trading Settings Symbols Report Research MyFXCM Chat

Simple Dealing Rates (3)

Symbol	Sell	Buy	Spred	High	Low	Roll S	Roll B	Pip Cost	MMR	Time
AUD/USD	1.03336	1.03352	1.6	1.03955	1.03257	-3.06	1.47	0.97	50.00	23:46:04
XAU/USD	1,387.18	1,387.68	50.0	1,392.94	1,364.94	0.00	-0.0866	0.01	5.00	23:46:03
AUS200	4,975	4,977	2.0	5,010	4,971	0.0289	-0.8757	1.00	70.00	23:45:51

Accounts (1)

Account	Balance	Equity	Day P/L	Usd Mr	Usbl Mr	Usbl Mr...	Gross P/L	MC	Type
4									

Orders (2OCO)

OrderID	Account	T	Status	Symbol	Amount	Sell	Buy	Stop	Limit	Time	Expir...
Entry Orders											
OCO AUD/USD (2)											
4!		E	Waiting	AUD/USD	10	1.03300				17/4/13	
4!		E	Waiting	AUD/USD	10	1.03400				17/4/13	
OCO AUD/USD (2)											
4!		E	Waiting	AUD/USD	10	1.03300				17/4/13	
4!		E	Waiting	AUD/USD	10	1.03450				17/4/13	

Open Positions (2)

Ticket	Account	Symbol	Amount	S...	Open	Close	Stop	Stop Move	Limit	P/L	Gross P/L	Roll	Time
160		AUD/USD	10	B	1.03299	1.03336				3.7	3.58	0.00	17/4/13 23:41
160		AUD/USD	10	B	1.03299	1.03336				3.7	3.58	0.00	17/4/13 23:41
Total			20							7.4	7.16	0.00	

News (0)

Messages

All Subscriptions Manage... Filter

Topic

Actions

Actions	Sent Time	Completed Time	Comments
Refresh Closed Positions	17/4/13 09:20	17/4/13 09:20	
Refresh Open Positions	17/4/13 09:20	17/4/13 09:20	
Refresh 5077564 Orders	17/4/13 09:20	17/4/13 09:20	

... I manually moved Target2 Limit in SC from 1.03400 to 1.03380 and this reflects in my LIVE FXCM account Platform (compare to previous slide)

FXCM Trading Station

System View Trading Charts Help

Sell Buy Stop/Limit Close Entry Trading Settings Symbols Report Research MyFXCM Chat

Simple Dealing Rates (3)

Symbol	Sell	Buy	Spre...	High	Low	Roll S	Roll B	Pip Cost	MMR	Time
AUD/USD	1.03366	1.03382	1.6	1.03955	1.03257	-3.06	1.47	0.97	50.00	23:54:45
XAU/USD	1,387.00	1,387.50	50.0	1,392.94	1,364.94	0.00	-0.0866	0.01	5.00	23:54:45
AUS200	4,977	4,979	2.0	5,010	4,971	0.0289	-0.8757	1.00	70.00	23:54:45

Accounts (1)

Account	Balance	Equity	Day P/L	Usd Mr	Usbl Mr	Usbl Mr, ...	Gross P/L	MC	Type
4									

Orders (2000)

OrderID	Account	T	Status	Symbol	Amount	Sell	Buy	Stop	Limit	Time	Expir...
Entry Orders											
OCO AUD/USD (2)											
4:		E	Waiting	AUD/USD	10	1.03300				17/4/13	
4:		E	Waiting	AUD/USD	10	1.03380				17/4/13	
OCO AUD/USD (2)											
4:		E	Waiting	AUD/USD	10	1.03300				17/4/13	
4:		E	Waiting	AUD/USD	10	1.03450				17/4/13	

Open Positions (2)

Ticket	Account	Symbol	Amount	S...	Open	Close	Stop	Stop Move	Limit	P/L	Gross P/L	Roll	Time
160		AUD/USD	10	B	1.03299	1.03366				6.7	6.48	0.00	17/4/13 23:41
160		AUD/USD	10	B	1.03299	1.03366				6.7	6.48	0.00	17/4/13 23:41
Total			20							13.4	12.96	0.00	

News (0)

All Subscriptions Manage Filter

Topic

Actions

Actions	Sent Time	Completed Time	Comments
Refresh Closed Positions	17/4/13 09:20	17/4/13 09:20	
Refresh Open Positions	17/4/13 09:20	17/4/13 09:20	
Refresh 5077564 Orders	17/4/13 09:20	17/4/13 09:20	

Target2 (limit) triggered, see next slide how this reflects in FXCM



... the remaining Target3 (limit) position

FXCM Trading Station

System View Trading Charts Help

Sell Buy Stop/Limit Close Entry Trading Settings Symbols Report Research MyFXCM Chat

Simple Dealing Rates (3)

Symbol	Sell	Buy	Spres	High	Low	Roll S	Roll B	Pip Cost	MMR	Time
AUD/USD	1.03379	1.03397	1.8	1.03955	1.03257	-3.06	1.47	0.97	50.00	23:56:37
XAU/USD	1,386.31	1,386.81	50.0	1,392.94	1,364.94	0.00	-0.086	0.01	5.00	23:56:37
AUS200	4,976	4,978	2.0	5,010	4,971	0.0289	-0.875	1.00	70.00	23:56:21

Accounts (1)

Account	Balance	Equity	Day P/L	Usd Mr	Usbl Mr	Usbl Mr, ...	Gross P/L	MC	Type
4									

Orders (1000)

Entry Orders

OCO AUD/USD (2)

OrderID	Account	T	Status	Symbol	Amount	Sell	Buy	Stop	Limit	Time	Explr...
4!		E	Waiting	AUD/USD	10	1.03300				17/4/13	
4!		E	Waiting	AUD/USD	10	1.03450				17/4/13	

Open Positions (1)

Ticket	Account	Symbol	Amount	S...	Open	Close	Stop	Stop Move	Limit	P/L	Gross P/L	Roll	Time
160		AUD/USD	10	B	1.03299	1.03379				8	7.74	0.00	17/4/13 23:41
Total			10							8	7.74	0.00	

News (0)

Messages

All Subscriptions Manage... Filter

Topic

Actions

Actions	Sent Time	Completed Time	Comments
Refresh Closed Positions	17/4/13 09:20	17/4/13 09:20	
Refresh Open Positions	17/4/13 09:20	17/4/13 09:20	
Refresh 5077564 Orders	17/4/13 09:20	17/4/13 09:20	

Conclusion

- 1.) Can you please make the necessary changes to SC (or FXCM's API), so that (if set) Target1 is the actual Trigger for a Move-To-Breakeven-AllGroupStop; or at least, executes the Move-To-Breakeven only when Target1 is (partial) filled?
- 2.) The 5th decimal issue, how this can/will be addressed?
- 3.) Please correspond with me with your proposed steps forward, as I am really eager to 'kick' my LIVE trading into second gear.