

F:USOCEG18 (CBV) 15 Min P3 1722.7 1715 1722.7 1715 2017-11-29 15:43:25 H: 1290.0 L: 1289.2 O: 1289.5 V: 4025 B: 1289.2 A: 1289.3 S3a2B TR: 1m 35s BV: 1864 AV: 2361 DV: 198691

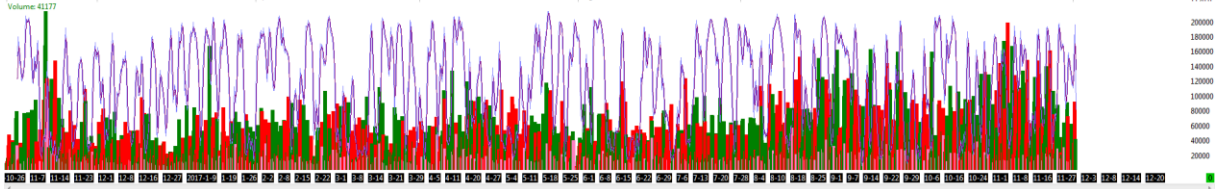
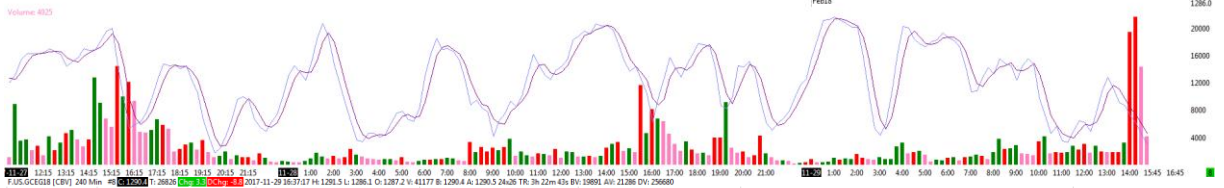


Chart Settings - F.US.GCEG18 [CBV] 240 Min #8 - Gold (Globex): February 2018

Main Settings | Advanced Settings | Advanced Settings 2 | Advanced Settings 3 | Alerts

Date Range In File (yyyy-mm-dd):  
 From: 2017-11-20 To: 2017-11-29

Chart Data Type:  
 Intraday Chart Only

Historical Chart Bar Period:  
 Days: 1  
 Weekly  
 Monthly  
 Quarterly  
 Yearly

Use Number Of Days To Load  
 Days To Load: 400 Market Depth: 10  
 Adjust Proportional With Bar Period

Use Date Range  
 From: To:

Price Display Format: .1  
 Tick Size: 0.100000  
 Auto-Set From Data Feed

Volume at Price Mult.: 1

Symbol: F.US.GCEG18 Find

Trade and Current Quote Symbol: Find

Intraday Chart Bar Period:  
 Bar Period Type: Days-Mins-Secs Per Bar  
 0-240-0 None

Session Times (HH:MM:SS):  
 Start Time: 00:00:00  
 End Time: 23:59:59  
 Use Evening Session  
 Evening Start: 00:00:00  
 Evening End: 23:59:59  
 New Bar At Session Start  
 Load All Weekend Data

Graph Draw Type:  
 OHLC Bars  
 Candlestick Bars  
 Candlestick Body Only  
 Candlestick Bars Hollow  
 Line on Close  
 Mountain

Scale  
 Apply Global Symbol Settings  
 Edit Global Symbol Settings

Automatically Rollover Futures Symbol  
 Save Days to Load, Intraday Bar Period, Graph Draw Type as Default

OK Cancel Apply Help

Chart Settings - F.US.GCEG18 [CBV] 240 Min #8 - Gold (Globex): February 2018

Main Settings | Advanced Settings | Advanced Settings 2 | Advanced Settings 3 | Alerts

Display Region Dividing Lines  Use Left Side Scale

Display Main Price Graph Values in Values Windows Settings

Draw Non-Highlight Drawings Underneath Main Graph and Studies

Draw Highlight Drawings Underneath Main Graph and Studies

Draw Advanced Custom Study Drawings Above Other Drawings

Draw Horizontal/Vertical Grid Above Graphs

Highlight Timescale Dates, Months and Years  Lock Fill Space

Adjust Tool Values to Tick Size Historical Pullback Data: None

Include Columns With No Data

Do Not Draw Columns With No Data

Include Weekend Columns Before First Trade

Include Sat-Sun Bars For Daily Charts

Continuous Contract: Continuous Futures Contract - Volume Based Rollover, E

Split Data Records  
 None  
 Continuous Futures Contract - Date Rule Rollover  
 Continuous Futures Contract - Volume Based Rollover  
 Continuous Futures Contract - Date Rule Rollover, Back Adjusted  
 Continuous Futures Contract - Volume Based Rollover, Back Adjusted  
 Continuous Futures Contract - Forward Curve  
 Continuous Futures Contract - Rollover Each Year, Same Month

Disable Data File U

Allow Zero Values

Apply Intraday Sess

Combine Sun-Mon

Attach Trade Window to Right Side

Align Order Cancel (X) Button to Right

Trade Drawings Left Align 100

Align Trade Drawings Text to Right

Start Date-Time (blank for all):

Format: Points (P)

Exclude:

Time Zone: Brussels (+1 CET/+2 CEST)

Chart Region: 1

Chart Update Interval In Milliseconds (0=Use Global): 0

OK Cancel Apply Help