

FOOTPRINT SIERRA CHART > **Candle Left** > **FP Cells right**

Column 1 > Cell Text & Background updated in real time.

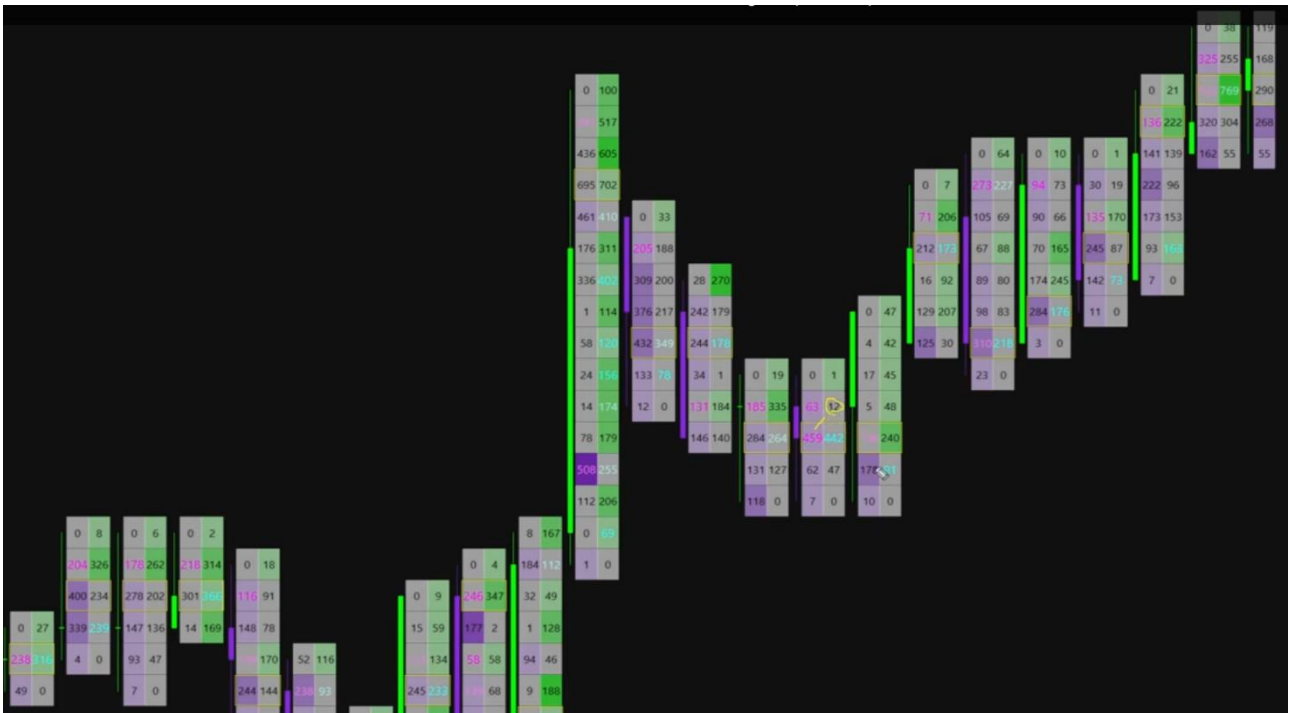
>> **Bid | Ask** > Default text color black > Default background light grey

>> **Delta** (cell background color) **BID** *-(minus)* **ASK** & **VICEVERSA** ↔

- (1/2/3/400 size steps ↔ ±darker = ±big number -
- Tot. Volume POC: outline Yellow).
- Minimum for coloration: 50 contracts

>> **IMBALANCES** (text):

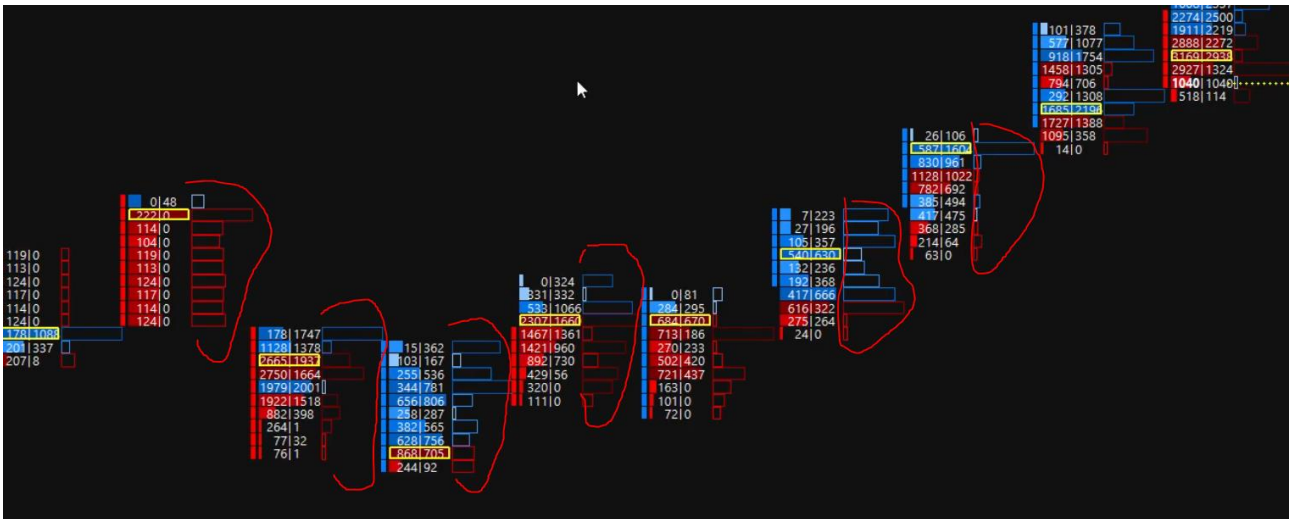
- DIAGONAL 4-3-2 times size steps in ↗↘ ±thicker = ±big number.
- Text color: Dark Violet > Violet BID // Light blue > blue ask > ±darker = ±big number.
- Minimum imbalances: 50 contracts



Column 2

>> Istogram delta Outline

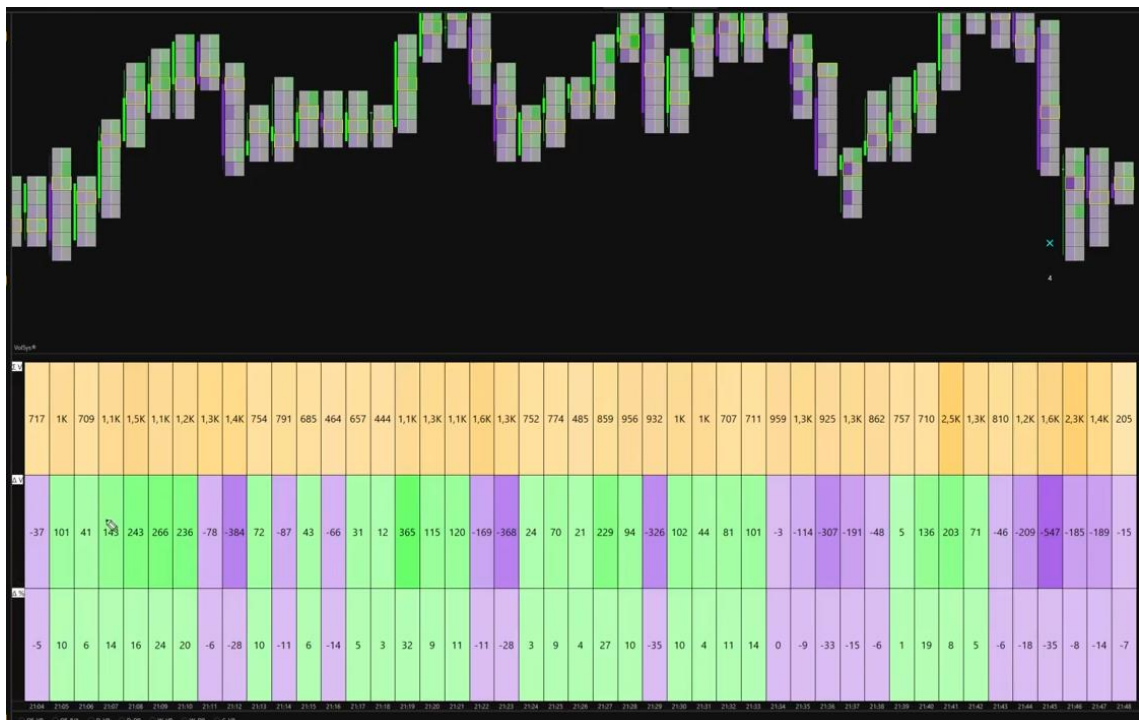
- \pm darker = \pm big number
- Same column 1 delta colors
- Delta POC > Yellow outline



Order Flow Values Grill

>> Text 20

- No minimum size
- Tot. Vol. 500/1000/1500 size steps // \pm darker = \pm big number



Tot. Vol. – same style
(Bid + Ask)

Delta Vol. – same style

Delta % = Delta/Tot. Vol

