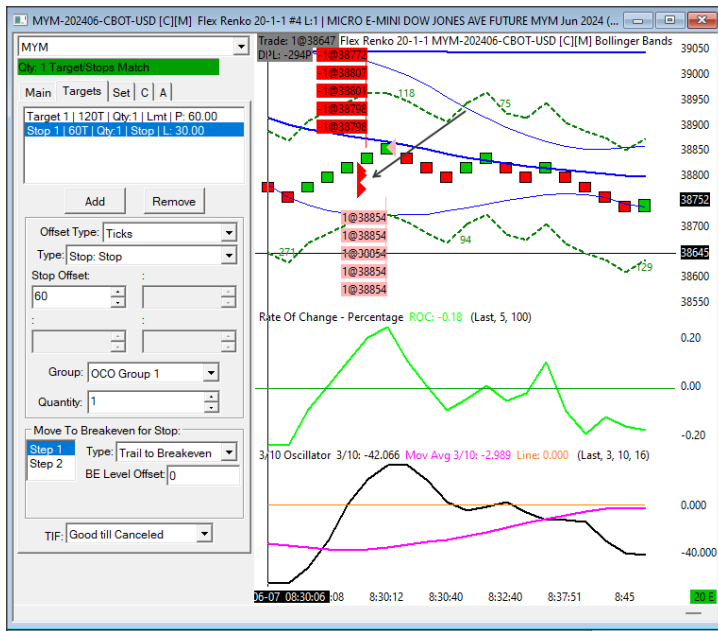


SLD	1	MYM Jun21'24 @CBOT	38772	USD	CBOT	08:30:08
SLD	1	MYM Jun21'24 @CBOT	38807	USD	CBOT	08:30:09
SLD	1	MYM Jun21'24 @CBOT	38801	USD	CBOT	08:30:09
SLD	1	MYM Jun21'24 @CBOT	38798	USD	CBOT	08:30:09
SLD	1	MYM Jun21'24 @CBOT	38798	USD	CBOT	08:30:09

Limit or Stop Price - Sell Entry (M) (read/write):	
Limit or Stop Price - Sell Exit (N) (read/write):	
Order Quantity (read/write):	1
Cancel Working Orders (read/write):	
Disable Auto Trading (read/write):	0



Study Settings: S7.0 MYM.ID:10

Settings and Inputs | Subgraphs | Alerts

Very Low Precedence

Based On: <Main Price Graph>

Short Name:

Chart Region: 1 Scale

Value Format: Inherited

Display As Main Price Graph

Hide Study

Draw Study Undereath Main Price Graph

Protect with Password

Spreadsheet Name: S7.0 MYM Select

Include in Study Summary

Include in Spreadsheet

Input Name	Input Value
Chart Data Output Specification Type (In:59)	By Number
Chart Data Output Sheet Number (In:1)	0
Chart Data Output Sheet Name (In:3)	
Number of Formula Columns (In:2)	16
Number of Rows (In:4)	1000
First Study Row to Graph (In:6)	1
Formula Source Sheet Specification Type (In:70)	By Number
Formula Source Sheet Number (In:7)	4
Formula Source Sheet Name (In:71)	Sheet4
Always Set Formula Source Sheet To Chart Data Ou...	No
Reset Condition On New Bar (In:10)	Yes
Do Not Output Subgraphs Set To Ignore (In:11)	No
Allow Multiple Entries in Same Direction (In:12)	No
Signal Only Once Per Bar (In:14)	Yes
Cancel All Orders on Entries and Reversals (In:15)	No
Cancel All Orders on Reversals (In:60)	Yes
Cancel All Orders on Entries (In:61)	No
Allow Entry With Working Orders (In:16)	Yes
Signal Only On Bar Close (Columns L, N-Z) (In:17)	Yes
Signal Only On Bar Close (Columns K, M) (In:18)	Yes
Maximum Position Allowed (In:20)	1000

Input: Select an input in the list above

OK Cancel Apply Help Description Set Defaults Reset Defaults

Study Settings: S7.0 MYM.ID:10

Settings and Inputs | Subgraphs | Alerts

Very Low Precedence

Based On: <Main Price Graph>

Short Name:

Chart Region: 1 Scale

Value Format: Inherited

Display As Main Price Graph

Hide Study

Draw Study Undereath Main Price Graph

Protect with Password

Spreadsheet Name: S7.0 MYM Select

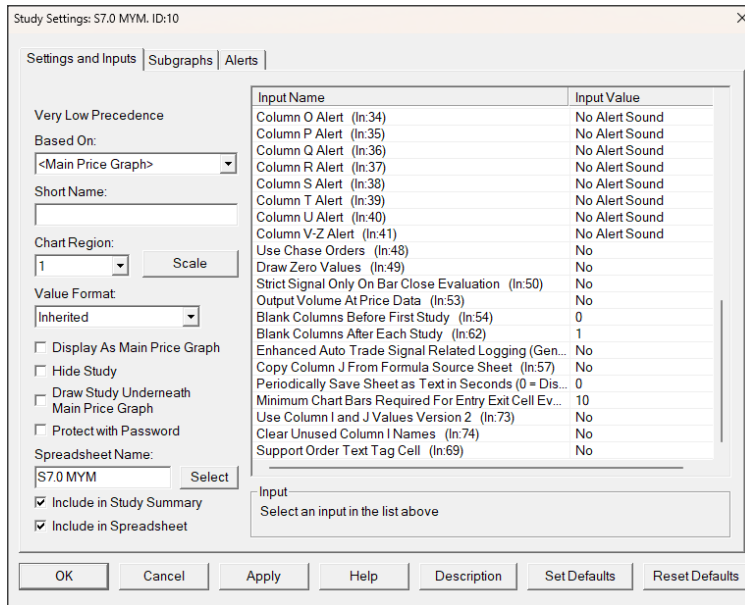
Include in Study Summary

Include in Spreadsheet

Input Name	Input Value
Maximum Position Allowed (In:20)	1000
Send Orders To Trade Service (In:21)	Yes
Support Reversals (In:22)	No
Allow Opposite Entry with Opposing Position or Ord...	No
Cancel All Working Orders on Exit (In:24)	Yes
Column K Alert (In:30)	No Alert Sound
Column L Alert (In:31)	No Alert Sound
Column M Alert (In:32)	No Alert Sound
Column N Alert (In:33)	No Alert Sound
Column O Alert (In:34)	No Alert Sound
Column P Alert (In:35)	No Alert Sound
Column Q Alert (In:36)	No Alert Sound
Column R Alert (In:37)	No Alert Sound
Column S Alert (In:38)	No Alert Sound
Column T Alert (In:39)	No Alert Sound
Column U Alert (In:40)	No Alert Sound
Column V-Z Alert (In:41)	No Alert Sound
Use Chase Orders (In:48)	No
Draw Zero Values (In:49)	No
Strict Signal Only On Bar Close Evaluation (In:50)	No
Output Volume At Price Data (In:53)	No

Input: Select an input in the list above

OK Cancel Apply Help Description Set Defaults Reset Defaults



Sell

=AND(T3=1,E3-(\$H\$4)>P3,EM3=1,FD3=1,Y3=1,(\$J\$41>(\$J\$43+1/1440)))

I recently added this time component to reduce trade frequency to a minimum of once per minute, but this did not work in this case.